

INDOFINE Chemical Company, Inc.

121 Stryker Lane, Bldg. 30, Suite 1 • Hillsborough, NJ 08844 • U.S.A.

Phone: (908) 359-6778 • FAX: (908) 359-1179

website: www.indofinechemical.com

e-mail: chemical@indofinechemical.com

CERTIFICATE OF ANALYSIS

Catalog Number: 06-1221

Product: **SPHONDIN**

CAS Number: [483-66-9]

Lot Number: 1606847

Chemical Formula: C₁₂H₈O₄

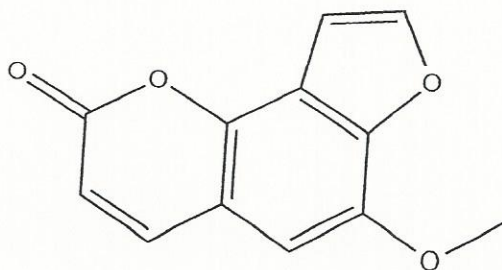
Molecular Weight: 216.19

Appearance: White powder

Loss on drying: 1.8%

Storage: Store in a cool, dry place. Protect from light.

Purity(HPLC): ≥95%





INDOFINE Chemical Company, Inc.

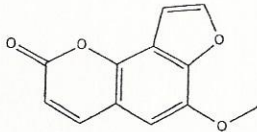
121 Stryker Lane, Bldg. 30, Suite 1 • Hillsborough, NJ 08844 • U.S.A.

Phone: (908) 359-6778 • FAX: (908) 359-1179

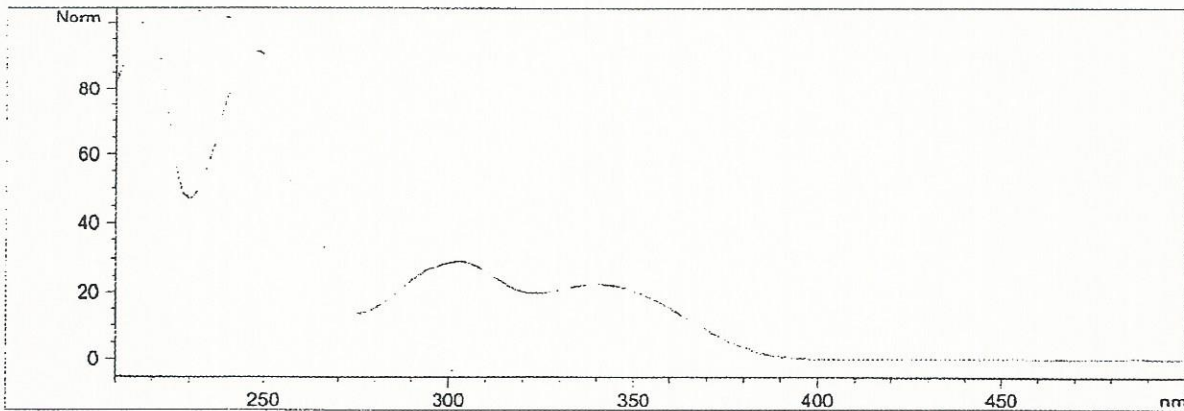
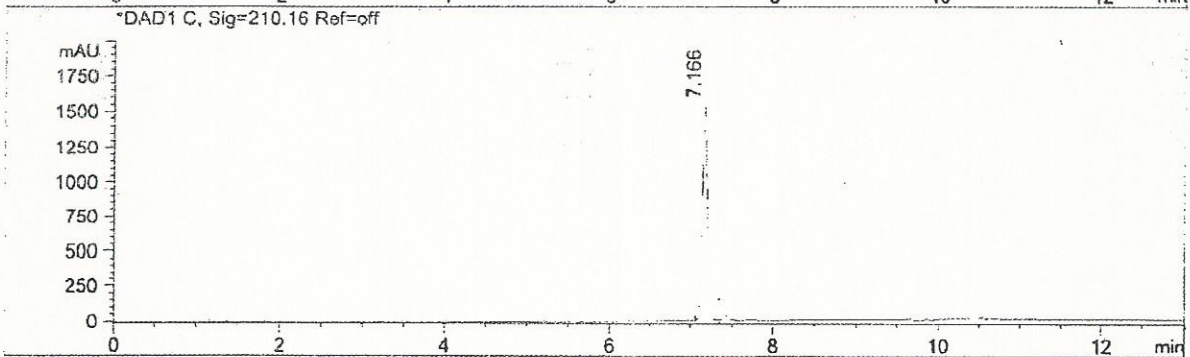
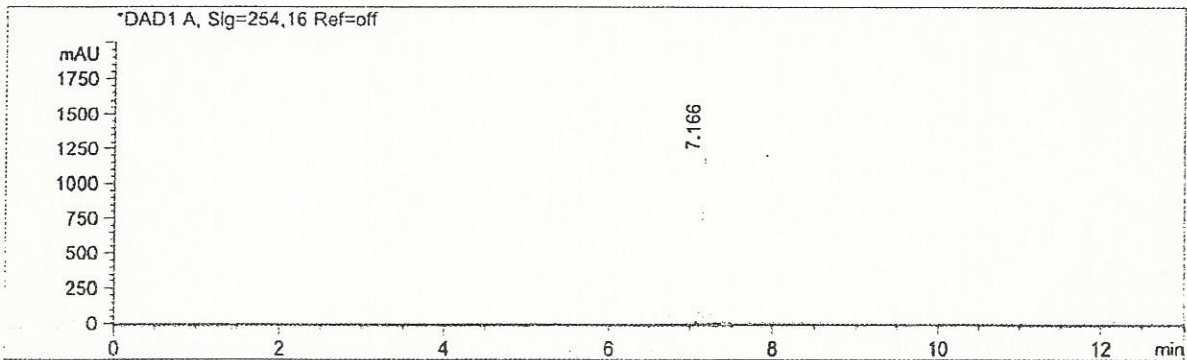
website: www.indofinechemical.com

e-mail: chemical@indofinechemical.com

HPLC ANALYSIS



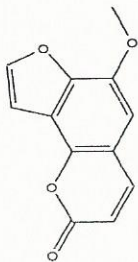
Catalog No.: 06-1221
Product Name: Sphondin
Lot No.: 1606847



Agilent 1200 series HPLC system
Extend-C18 column (5 μ m, 4.6 \times 150 mm)
20% \rightarrow 100% MeOH in H₂O over 8.0 min followed by 100% MeOH to 13.0 min
1.0 ml/min, 20°C



INDOFINE Chemical Company, Inc.
121 STRYKER LANE
BLDG. 30, SUITE 1
HILLSBOROUGH, NJ 08844



Catalog No.: 06-1221
Product Name: Sphondin
Lot No.: 1606847

CDCl₃, 400 MHz

4.034

6.402
6.378

6.770

7.114
7.119

7.260

7.738
7.698
7.893

